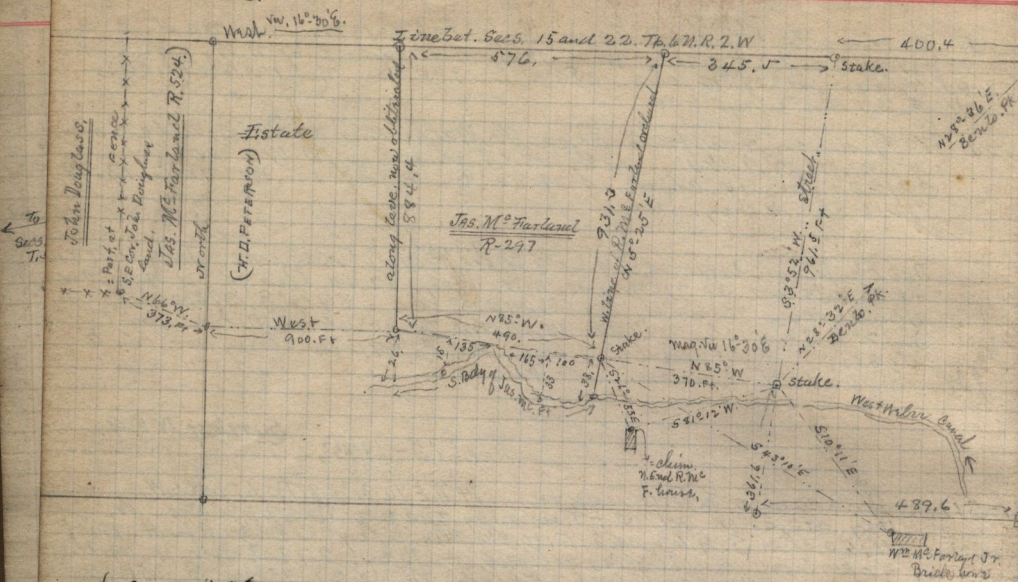


Dec. 7<sup>th</sup> 1895.

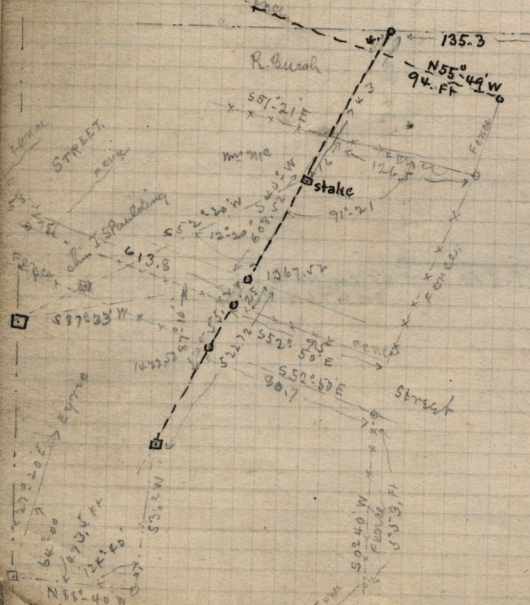
W<sup>m</sup> M<sup>c</sup> FARLANDS Estate, West Weber.



{ See Book, K. page 28 - } survey N<sup>o</sup> 10  
 { Plat book. page 136 - }

Dec. 17-1895 N<sup>o</sup> 10  
 Copy of description in deed made from M. B. Child

to Jas. N. Hamblin, Pt N. W 1/4 Sec. 7, T. 5. N. R. 1. W. Sec. 488.4 Ft. E & 233.64 Ft. N, 4 1/2 E. of S.W. cor. ad 1/4 S 83° E 238.92 Ft. N 5° 43' E 50.16 Ft. on W side alley, N 83° W 239. Ft. to point N 4 1/2 E. of cor. S 4 1/2 W. - Also, Sec. S.W. cor. S 2 1/4 E 488.4 Ft N 4 1/2 E 50.16 Ft. W to point N. of Sec. 8. 50.16 Ft. to Sec.



pt. of Survey N<sup>o</sup> 8.

See also page 179-174-